

An aerial photograph showing a large, calm body of water, likely a bay or estuary, surrounded by lush green fields and a small town. The water is a deep blue, and the land is a mix of vibrant green and brownish fields. In the foreground, there are several buildings, a parking lot, and a road. The sky is clear and blue, suggesting a bright day. The overall scene is peaceful and scenic.

Sustaining Restored Oyster Reefs Through Cross-Sector Partnerships

Lauren Taneyhill, Partnerships Program Analyst, NOAA / ERT, Inc.

- [WHAT WE DO](#) - [WHY WE DO IT](#) - [PARTNERS](#) -

[Explore Our Interactive Map](#)

ENVISION_{THE}CHOPTANK

Map navigation controls including zoom in (+), zoom out (-), home, and search (Find address or place) buttons.

Choptank Watershed Boundary



Oyster Restoration Tributaries:

- Harris Creek
- Tred Avon
- Little Choptank

Chesapeake Bay Watershed



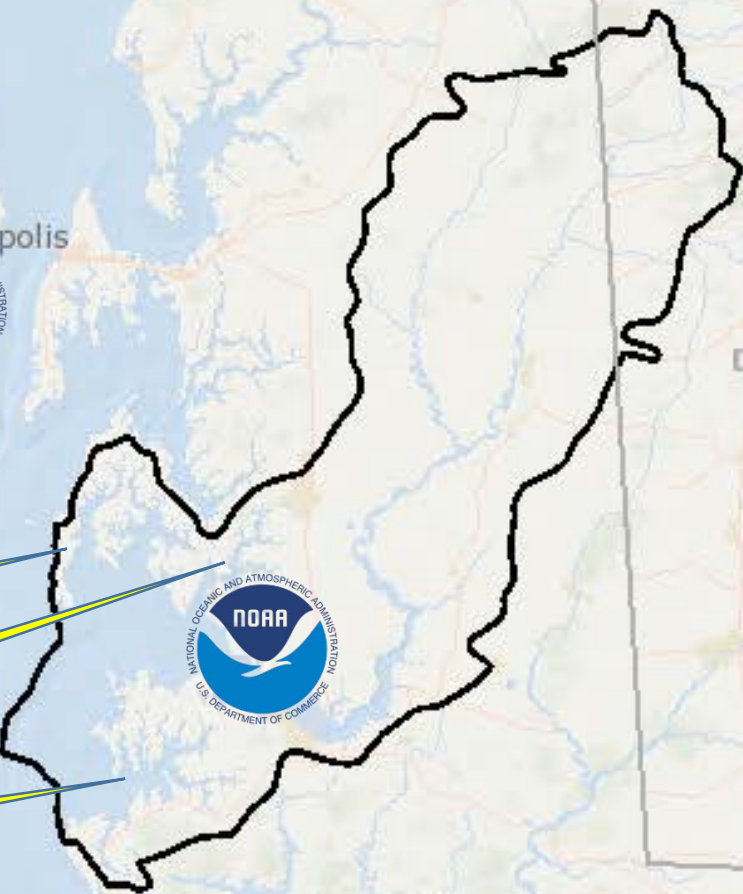
NOAA Habitat Focus Areas



NOAA selected ten Habitat Focus Areas to help communities protect & restore valuable natural resources that support local economies.

Map navigation controls including zoom in (+), zoom out (-), home, and search (Find address or place) buttons.

Choptank Watershed Boundary



Oyster Restoration Tributaries:

- Harris Creek
- Tred Avon
- Little Choptank



Chesapeake Bay Watershed

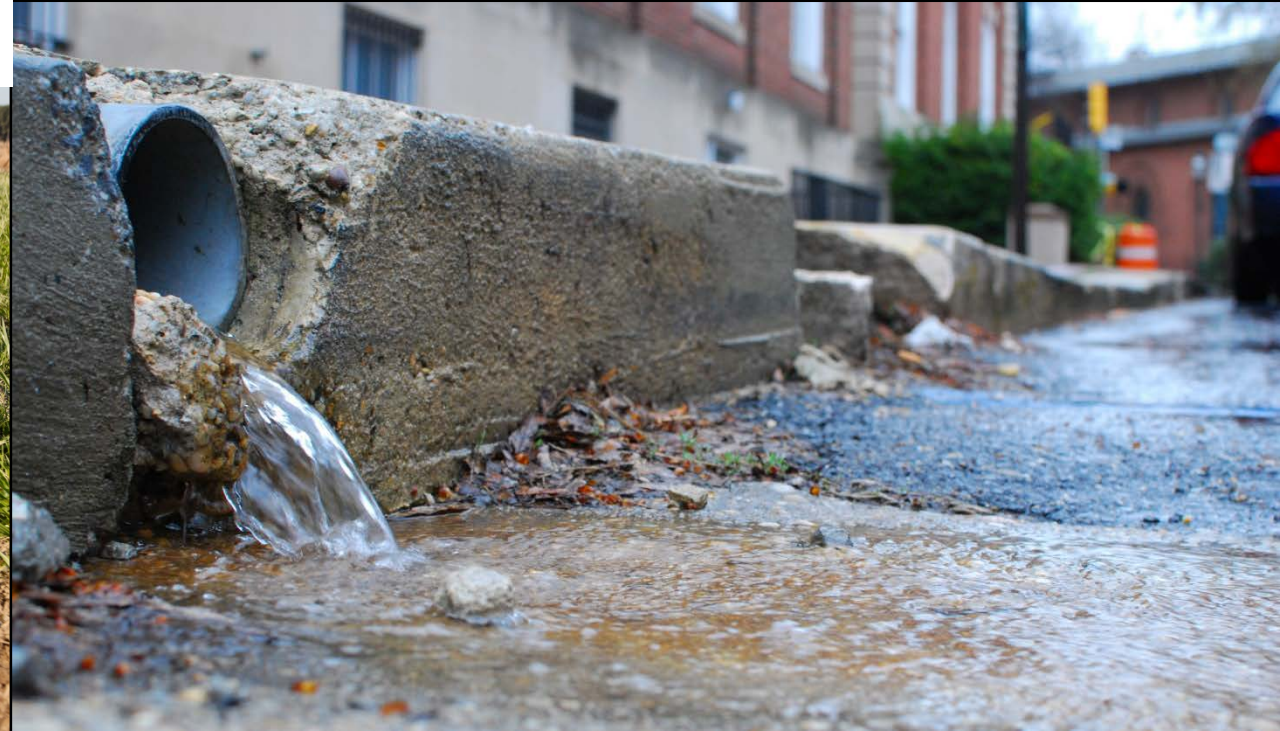


- Historically Abundant Marine Life
- Rural Lifestyle
- Rich Heritage





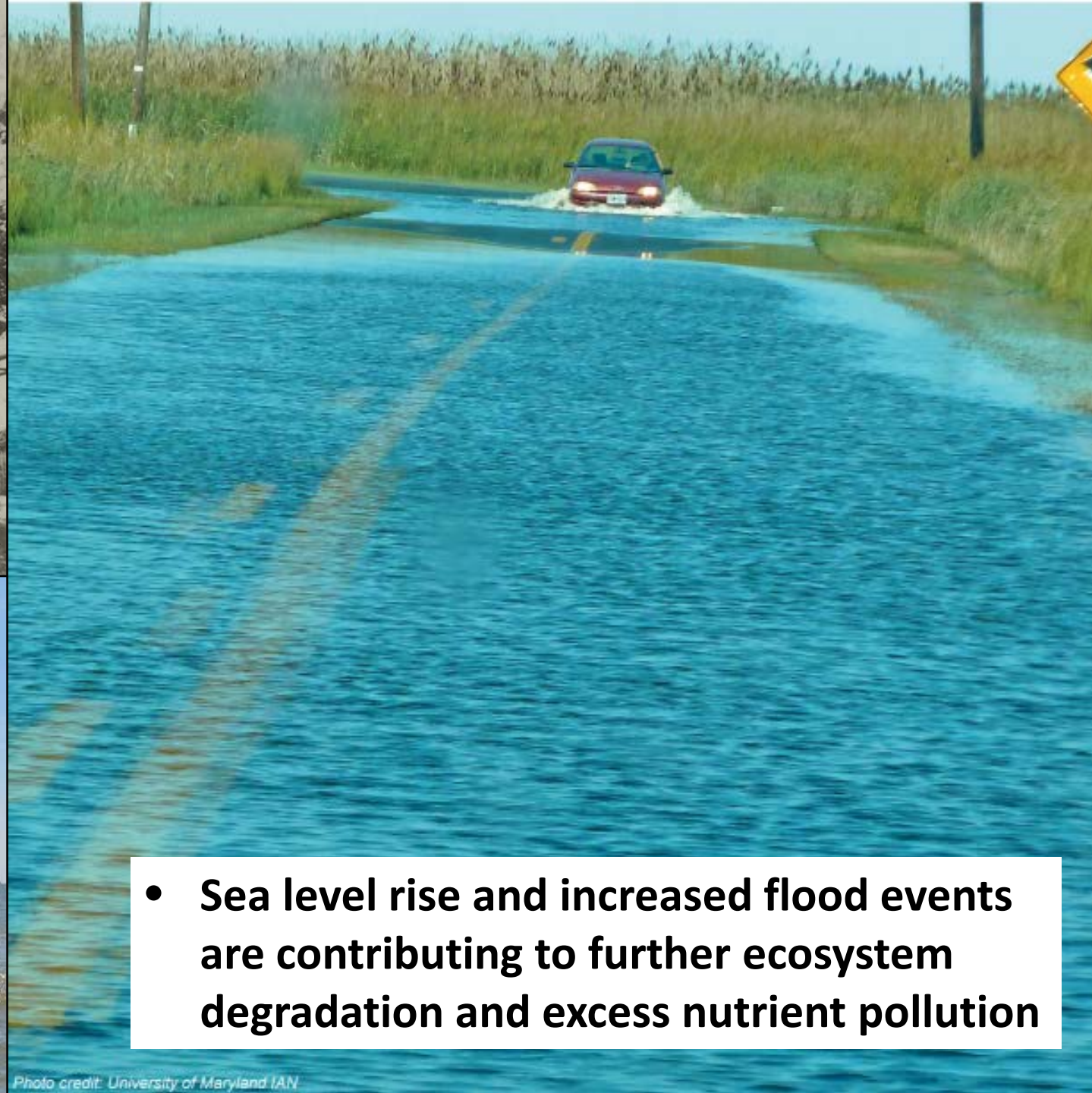
- **River Continues to Degrade (says some data)**
- **Pollution from Farms and Suburban Sprawl**



1910



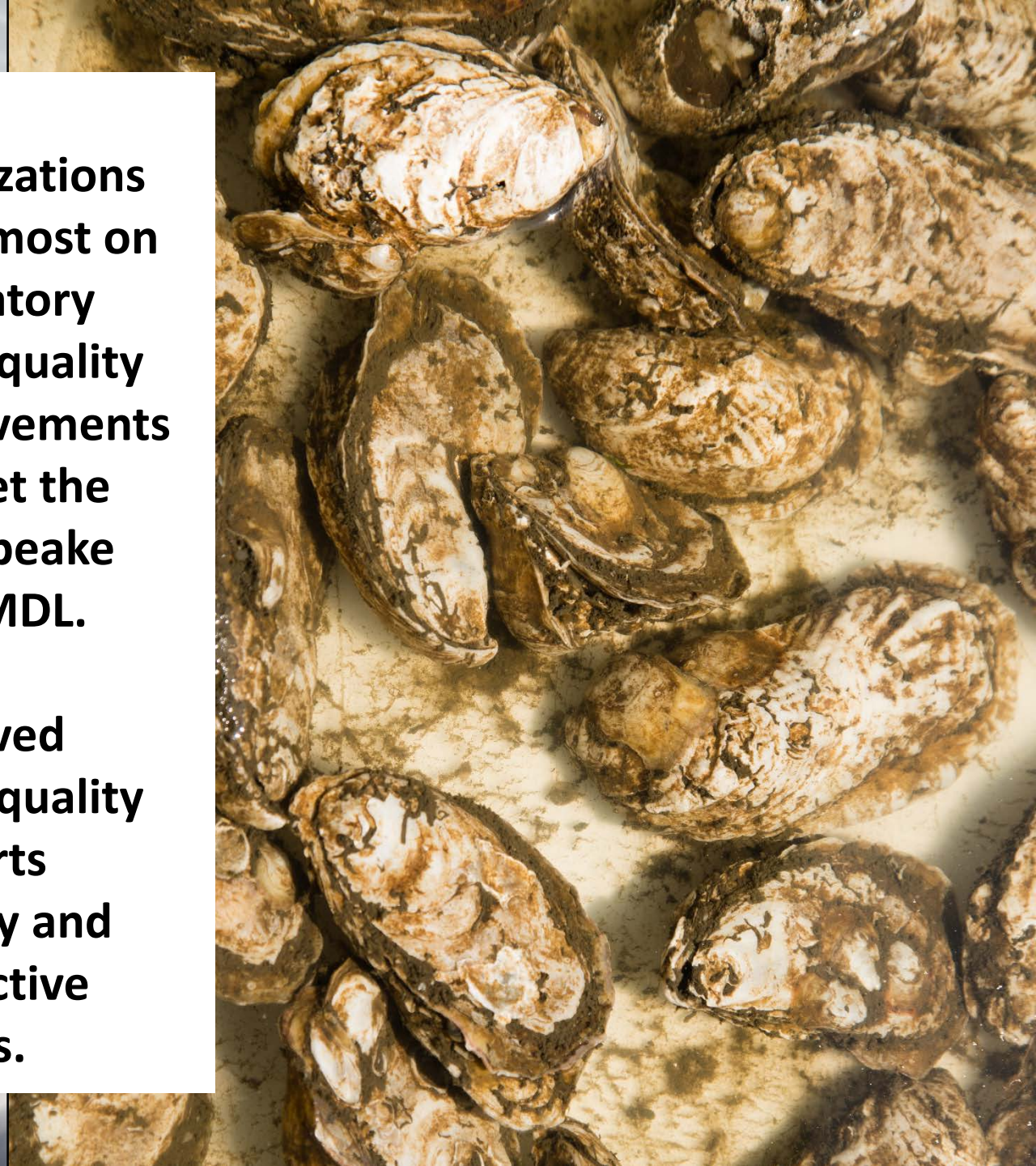
2014



- **Sea level rise and increased flood events are contributing to further ecosystem degradation and excess nutrient pollution**



- **Local organizations focus most on mandatory water quality improvements to meet the Chesapeake Bay TMDL.**
- **Improved water quality supports healthy and productive oysters.**





OYSTER RECOVERY PARTNERSHIP
— ORP —



ENVISION THE CHOPTANK



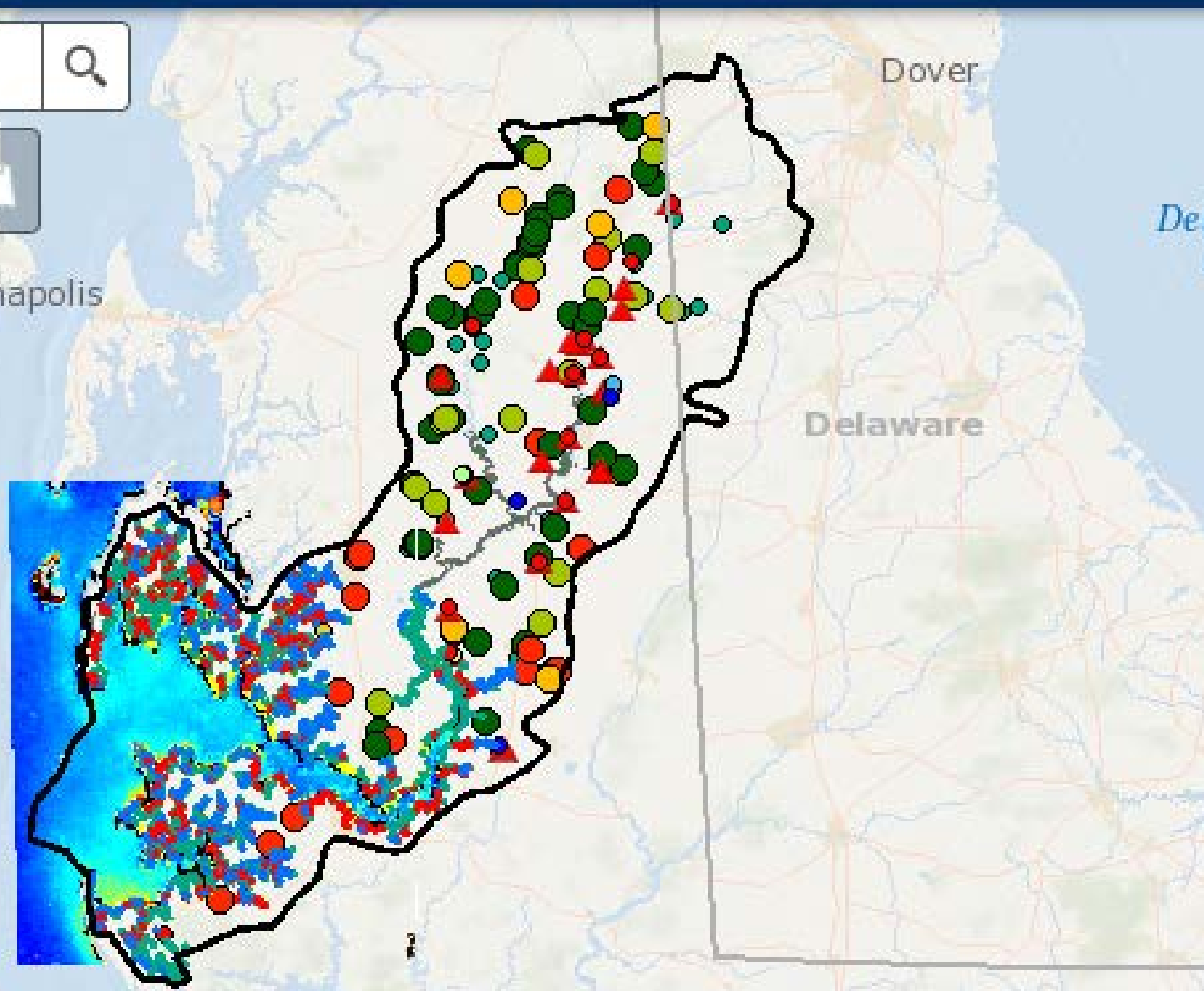
CHESAPEAKE BAY FOUNDATION
Saving a National Treasure



UNIVERSITY OF MARYLAND
EXTENSION
Solutions in your community

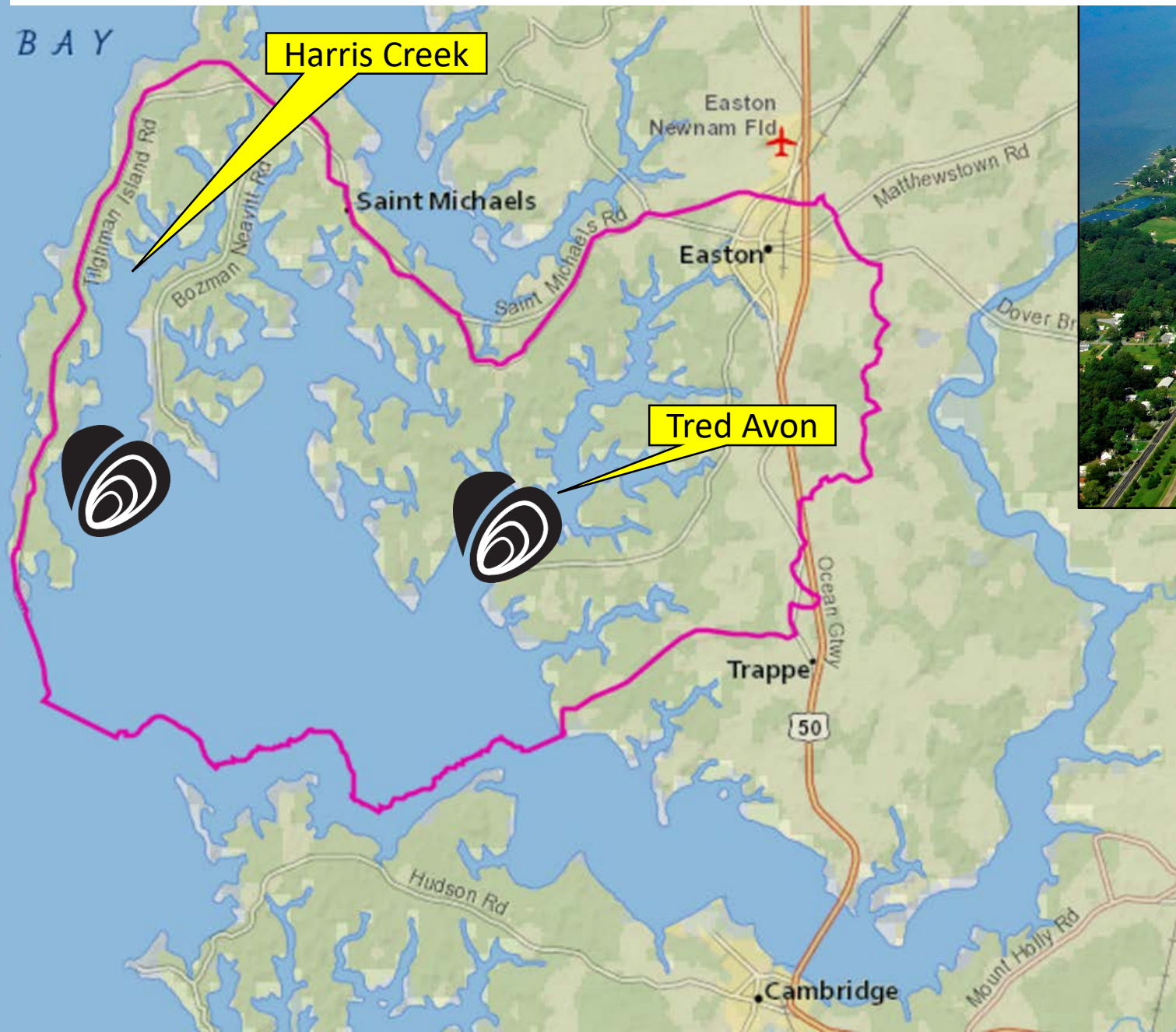


Map navigation controls including zoom in (+), zoom out (-), home, and search (Find address or place) buttons.



- Mapping common priorities and ecosystem trends

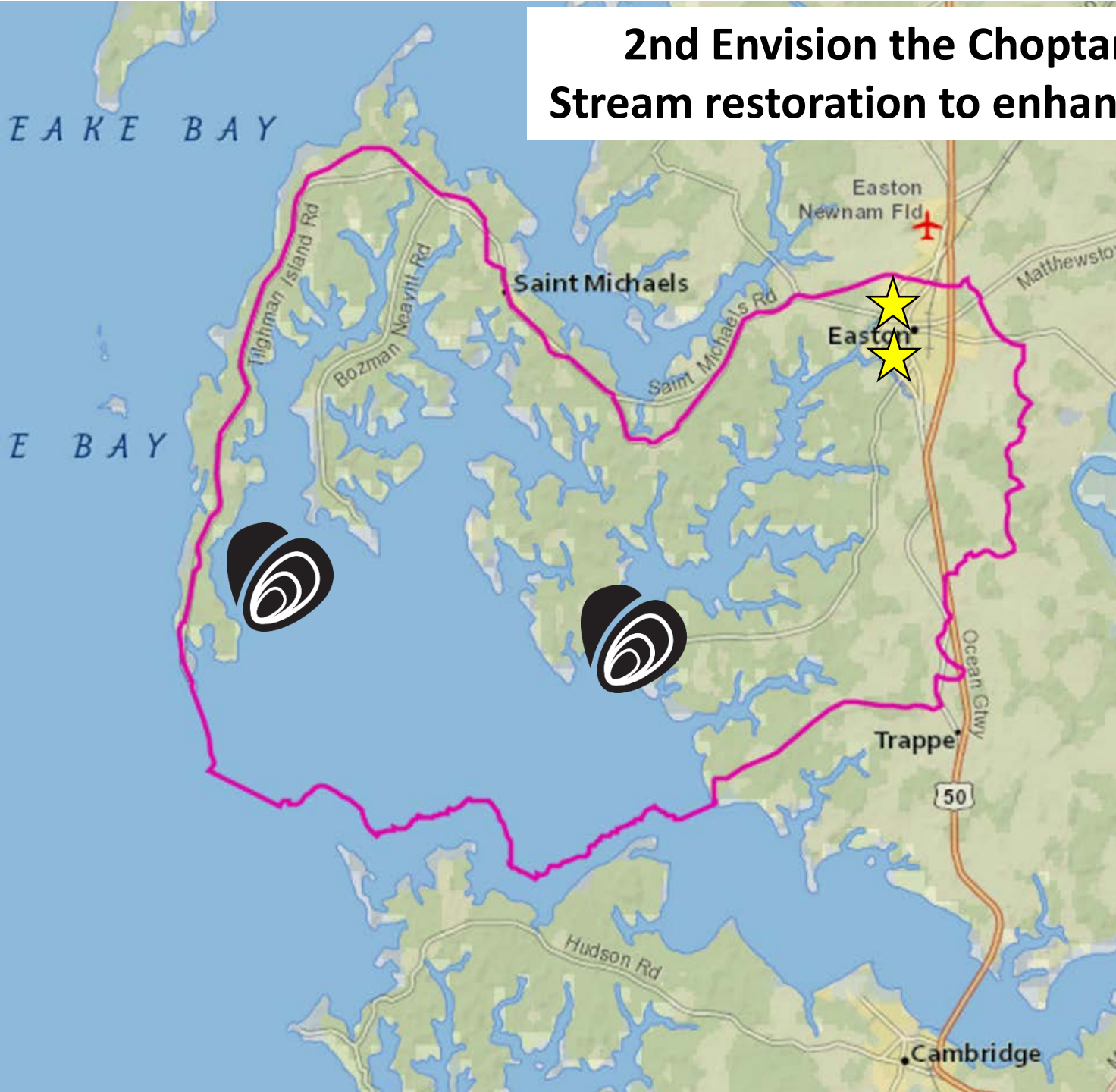
Envision the Choptank partners' common priority location



First Envision the Choptank restoration project: Collaborative Restoration for Oyster Success



2nd Envision the Choptank project: Stream restoration to enhance fish habitat





Setting the course for long-term collaborative restoration with a common agenda.

A close-up photograph of a person's hand holding a metal tray filled with crushed ice. On the ice are several oysters, two small metal cups containing dipping sauces, and a wedge of lemon. The person is wearing a dark long-sleeved shirt. In the background, a white tray filled with silverware is visible on a stainless steel counter. The scene is set in a restaurant or bar with a window on the left.

Thank you

**Lauren Taneyhill, NOAA / ERT Inc.
Lauren.taneyhill@noaa.gov**